



**EXECUTIVE BOARD**

**Richard Bennof**, President  
[bennof4skins@aol.com](mailto:bennof4skins@aol.com)

**Dr. Howard Waterworth**, 1st Vice  
President /Legislative Chair  
301-731-3063  
[hwatworth11@gmail.com](mailto:hwatworth11@gmail.com)

**Elaine Cameron**, 2nd Vice  
President/Membership Chair  
301-792-7544  
[elainecameron@aol.com](mailto:elainecameron@aol.com)

**Delores Green**, Secretary  
301-577-5407  
[deloresfgreen@verizon.net](mailto:deloresfgreen@verizon.net)

**Warren Wilcox**, Treasurer  
301-345-7437  
[wwwilcox@juno.com](mailto:wwwilcox@juno.com)

\*\*\*\*\*

**Creavery Lloyd**, Alzheimer's Chair  
301-552-1219  
[cylloyd@netzero.net](mailto:cylloyd@netzero.net)

**Vacant**  
Chaplain

**Lee Shields**, Newsletter Distributor  
301-474-5321  
[swinenet1@verizon.net](mailto:swinenet1@verizon.net)

**Barbara Smith**, Newsletter Editor  
301-441-1989  
[bsg.smith@verizon.net](mailto:bsg.smith@verizon.net)

**Vacant**  
Program Chair

**Robert F. Haas**, Public Relations  
301-937-7987  
[happyanniversary@netzero.net](mailto:happyanniversary@netzero.net)

**Melinda Scott**, Service Officer  
and Photographer  
202-407-3484  
[mjscott11@verizon.net](mailto:mjscott11@verizon.net)

**Vacant**  
Historian

**Vacant**  
NARFE-PAC Chair

**Robert Doyle**, Immediate Past  
President  
[lynbob20770@yahoo.com](mailto:lynbob20770@yahoo.com)

**eNARFE MEMBERSHIP RAPIDLY GROWING**

**Dr. Howard Waterworth, 1st Vice President and Legislative Chair**

**F**ounded in 1921, NARFE legacy now spans some 95 years working in support of our members before OPM, Congress and the White House. NARFE had grown to some half million members at its peak in the 1990s. But NARFE, like so many organizations and clubs in today's environment, has lost large numbers of members in recent years. We now at about 210,650 members nationally according to Dick Strombotne, MD Federation Membership Chairman. The result is that some chapters have folded or merged with adjacent chapters. NARFE headquarters and many State Federations have taken special actions to reverse the loss of members. (See May 2014 and January 2015 articles in this newsletter on this matter). There is some good news; there has been rapid growth of a national online chapter - "eNARFE 2363" and a state eNARFE chapter in Florida.

eNARFE is an online membership option designed to fit with busy schedules; however, members are welcome to attend local chapter meetings. Begun in March 2011, it has grown to nearly 24,023 by December 2014. According to Dick Strombotne, over 8,300 of these members have been reinstated from their former regular chapter membership.

Regular chapter membership continues to be important, according to our National President Richard Thissen with whom I spoke regarding membership and determining NARFE goals and priorities. Even though membership has changed from about 305,000 in 2010 to 235,000 in 2014 some 40-60 thousand are due to deaths. Taking this into account NARFE retention, including eMembers, is about 92.2%, which he says has been better than most similar associations, with retention rates of 81.3%. During testimony in Congress Thissen used 5.2 million as

the number of active and retired federal persons in the USA.

Chapters and Federations continue to be needed by offering important information to our National office by, among other means, establishing priorities that originate from the many state-wide conventions.

The concept for eNARFE membership began at the convention in 2010 by Vice President Paul Carew who advocated the establishment of a national chapter to serve its members by email and to have no physical location. It was approved and after intermediate action, was implemented in March 2011.

On the eChapter website one can get regular updates from Capitol Hill, action alerts, and weekly legislative hotlines. Members have access to the latest news related to active workers and retirees, general benefits information and advice, and FERS-related information, according to a report from our Headquarters. Membership also includes the same perks as regular chapter membership to include a subscription to our monthly magazine and access to the NARFE blog.

eNARFE functions according to its By Laws comprising some 8 Articles which address such issues as its Name, Objectives, Membership, Dues, Officers and Committees, National convention delegates, and chapter Meetings; and are currently being updated. eNARFE also answers individual personal questions by Federal Benefits Service Specialists.

One can join eNARFE on line by going to NARFE.org and clicking on membership, or phone 800-627-3394. Annual dues are \$40, same as for regular chapter membership, and can be paid on line or by mailing a check to the headquarters office in Alexandria, VA.

**PAST CHAPTER PRESIDENTS**

**Chapter 1122**

Robert Doyle  
Robert F. Haas  
John Fleming

**Chapter 2146**

Irwin Neveleff  
Marty Eiband  
Emma E. Barnett

**Chapter 264**

Tom LoJacono

**Total Chapter Membership**

**April**

**666**



**Chapter Corner**

For the month of April the chapter membership report listed no new members. One member, **Edward Zipeto** transferred into the chapter and two members, **Frank Sanders** and **Frances Taylor** transferred out of the chapter to other chapters.

Your attendance would be greatly appreciated at the monthly meetings. Come hear interesting speakers, learn more about NARFE, meet and socialize with fellow chapter members. Bring a neighbor, friend, co-worker, family member, active Fed or retired Fed to the meeting with you; they are always welcome.

The chapter still needs volunteers for vacant positions. Please volunteer today.

To all sick and shut-in members we wish you a speedy recovery and may a little sunshine peek through your window each day.

To May Birthday Members  
**"Happy Birthday"**  
from all of us!

**Richard Payne** won the 50/50 drawing at the April meeting. Congrats to him on winning "some spare change."

**Richard Bennof** and **Melinda Scott** attended the NARFE Maryland Federation Convention in Ocean City, MD on April 26-28. A report will be given at the May meeting.



*In Memoriam*

It was with great sorrow we learned of the passing of **Hugh Gribben** who was the chapter's program coordinator and historian for several years. Hugh passed away in April, a short time after the death of his wife. He and his wife **Ella Gribben** had been married for 53 years. Ella passed away in March. The chapter sends its deepest sympathy to their children and other family members for their loss.

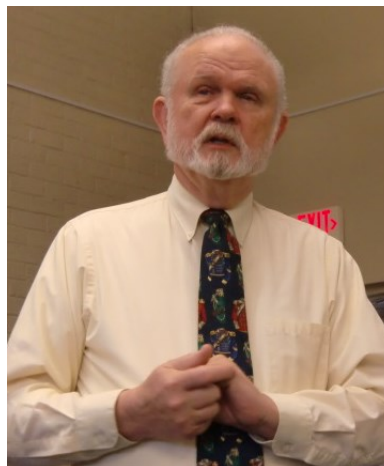
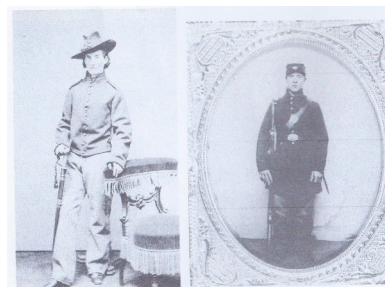


Photo by Melinda Scott

**A BIG THANK YOU TO Bob Luddy, Historian**

For his informative presentation, "Hiding in Plain Sight: Female Combat Soldiers in the Civil War." All the members in attendance were transformed into attentive history buffs.

One question asked was how did women actually get into the Army? The North and South had the same rule - no women in the Army. Some of the things women would do to join the Army, was cut their hair, rub dirt on their faces, and wear men's clothing. Next, they would find a Recruiting Center where no one would recognize them. If they had a pretty good size trigger finger, they could make it. It is hard to say how many women were in service. If they got caught trying to join as a man, there was no jail time. They would just be sent back home. For more detail and information you may want to read "Women on the Civil War Battlefield," written by Richard H. Hall. Pictured below are some pictures that were on display of women in combat uniforms.



Pvt. Frances Clayton

Pvt. Sarah Wakeman



Possible woman soldier

**WALK TO END ALZHEIMER'S  
Creavery Lloyd, Alzheimer's Chair**

**STOP** - Think about this - Alzheimer's is an incurable disease with NO survivors. **NOW** - Think about how important Alzheimer's research has become. Research is important because it helps find ways to slow down the disease and gives the patient and the family more quality time together. So please make a donation to fight ALZHEIMER'S.

Chapter 1122 will again register for the "Walk to End Alzheimer's." We hope you will join us. More information will be forthcoming for your walk "on-line."

If you wish to give now and donate to this tax deductible and worthy cause, please make your check payable to:

NARFE Alzheimer's Research  
(note on check Chapter 1122)

Send to:  
Creavery Lloyd, ALZ Chair 1122  
6725 Lamont Drive  
Lanham, MD 20706

I will send you a receipt. Thank you in advance for your donation.

**Celebrating  
Armed Forces Day**

The first Armed Forces Day was celebrated on Saturday, May 20, 1950. The theme for that day was "Teamed for Defense," which expressed the unification of all military forces under one government department. According to the U. S. Department of Defense, the day was designed to expand public understanding of what type of job was performed and the role of the military in civilian life.

Armed Forces Day was a day for the military to show "state-of-the-art" equipment to Americans. It was also a day to honor and acknowledge Americans in the armed forces. Parades, open houses, receptions and air shows were held at the inaugural Armed Forces day.

Armed Forces Day is still celebrated nationwide today and is part of Armed Forces Week.

**SPRING LUNCHEON MEETING - SIR WALTER RALEIGH INN**



**Wednesday, June 10, 2015 at 12 noon**

**Sir Walter Raleigh Inn  
6323 Greenbelt Road  
Berwyn Heights, MD 20740**

**\$25 per person Includes tax & gratuity  
Reservations must be made by **June 8****

**\*Choice of Entrée, Open Salad Bar, Dessert, Coffee, Tea & Soft Drink  
(Alcoholic beverages not included)**

**\*Prime Rib Au Jus \*10 oz. Sirloin Steak \*Jumbo Lump Crab Cake \*Baked New England Scrod  
\*Beer Battered Fried Shrimp \*BBQ Chicken Breast \*Hawaiian Chicken Breast  
Served with Baked Potato or Rice**

**Make check payable to NARFE Chapter 1122 and mail to:  
Warren Wilcox, Treasurer  
8141 Mandan Terrace, Greenbelt, MD 20770  
301-345-7437 [wcwilcox@juno.com](mailto:wcwilcox@juno.com)**

**NARFE Chapter 1122  
Treasurer's Report for  
March 2015**

Balance as of 2/27/2015 \$3,448.08

Income:

NARFE (Mar Dues) 197.46

Total Income 197.46

Expenses:

W. Wilcox (\$25 Gift Card NARFE Fed Con) 30.95

USPS (Apr Newsletter Mailing) 55.75

Total Expenses 86.71

Balance as of 3/31/2015 \$3,558.83

Submitted: Warren C. Wilcox, Treasurer

**NARFE opposes House FY 2016 budget, issues Action Alert:** The House Fiscal Year 2016 budget attacks federal and postal employees and retirees by eliminating federal jobs, increasing retirement contributions for current employees, raising the cost of health insurance for both current federal and postal employees and retirees, and changing the rate of return on the Thrift Savings Plan G Fund. The savings from these cuts total \$318 billion. Before the House votes, members of Congress need to hear from you! All NARFE members must respond quickly by sending a letter or email to your representative urging him/her to vote against this budget.



**What's Your Email  
Address?**

**If you are not currently receiving the newsletter monthly by email and you would like to -- we probably don't have your correct email address. Please update your email address by notifying Membership Chairperson Elaine Cameron: [elainecameron@aol.com](mailto:elainecameron@aol.com)**



TIME SENSITIVE MAIL DO NOT DELAY DELIVERY

NON-PROFIT ORG.

US Postage Paid

College Park

Permit # 3772



NARFE Chapter 1122  
7353 Green Oak Terrace  
Lanham, MD 20706

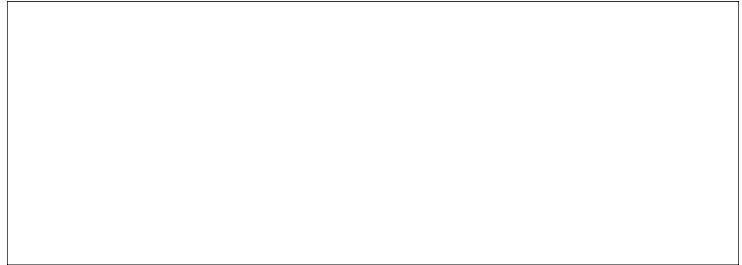
Chapter 1122 Website  
[www.mdnarfe.org/chapter1122](http://www.mdnarfe.org/chapter1122)

MD Federation Website  
[www.mdnarfe.org](http://www.mdnarfe.org)

NARFE National Website  
[www.narfe.org](http://www.narfe.org)



RETURN SERVICE REQUESTED



**Upcoming Events**

- May 10  
Mother's Day
- May 13  
Chapter Meeting
- May 16  
Armed Forces Day
- May 25  
Memorial Day

**CHAPTER 1122 MONTHLY MEETING**

**Wednesday, May 13, 2015 at 1:30 PM**

*Greenbriar Community Center, Terrace Room  
7600 Hanover Parkway, Greenbelt, MD 20770*

Call office for directions 301-441-1096 Dial 0

*Speaker*

*Harrine Freeman  
Financial Counselor and  
Financial Literacy Advocate  
H. E. Freeman Enterprises*



**Topics:**

- **How to Avoid Being a Victim of a Scam**
- **How to Pay Your Bills on a Fixed Income**
  - **How to Restore Your Credit**



**All Are  
Welcome**

**Refreshments  
Served**

**PLEASE NOTE:**

**Executive Committee meeting will immediately follow regular meeting**

NARFE National Headquarters  
(Direct Line)  
**1-703-838-7760**

NARFE Sponsored Line  
to Congress  
**1-866-220-0044**

To contact Maryland Delegates and  
Representatives  
Call 301-858-3000  
or visit the NARFE Web Site  
[www.mdnarfe.org](http://www.mdnarfe.org)

To reach the Governor call  
1-800-811-8336  
or visit the Web Site

[www.gov.state.md.us/mail](http://www.gov.state.md.us/mail)

Inclement Weather Notice! When Prince George's County Schools are closed or opening late, the NARFE Chapter 1122 meeting will not be held.